

# Office to let

## Romanitza Center

Bucharest, Sector 1, 1-3 Macul Rosu Street

### Building information

Building status	Existing
Year of construction	2010
Parking ratio	1 / 56 sq m
Total building area	1 420 sq m

### Commercial terms

Office space*	after login *
Parking	after login *
Service charge*	after login *
Minimum lease term	after login *
Availability	after login *

\* Asking terms for m<sup>2</sup>/month

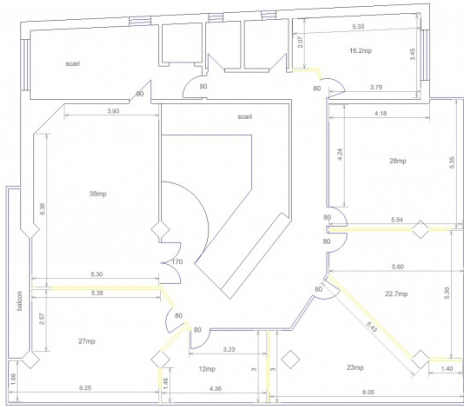
### Location



### Available space

Building completely leased

Typical floor plan



Public transport

Metro: M1, M2

Tram: 1,24, 42

Contact



+40 21 302 3400

More information